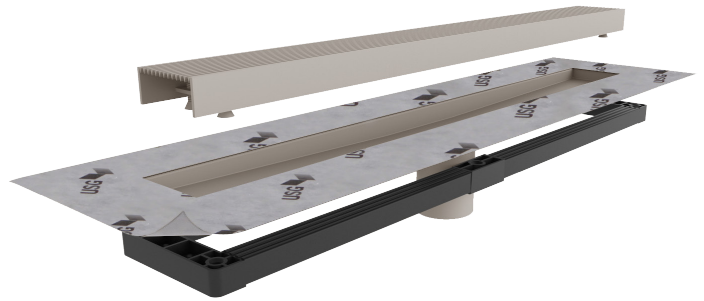




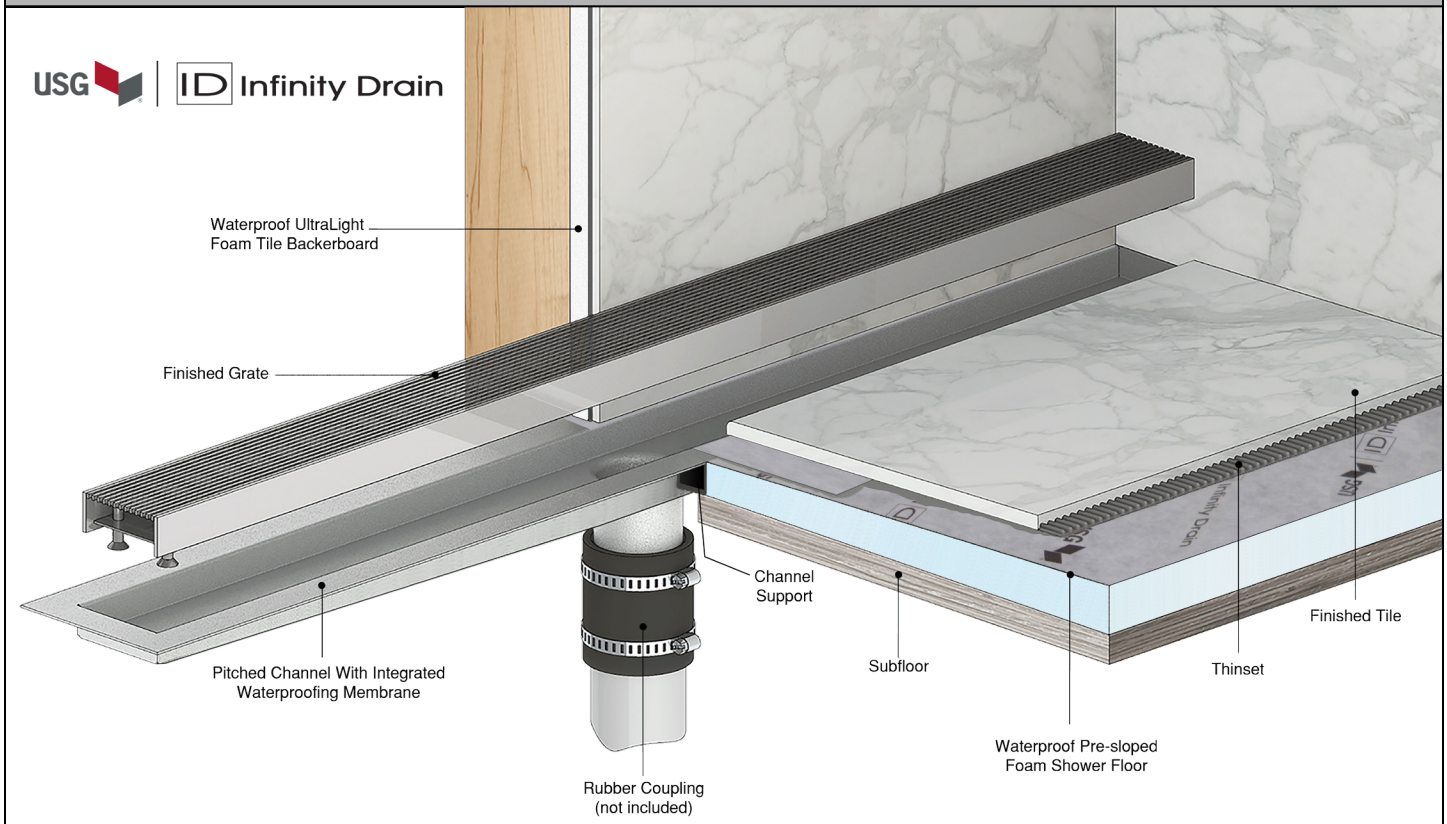
## USG DUROCK™ Brand Infinity Drain™ Wedge Wire Linear Drain Kit

### Features

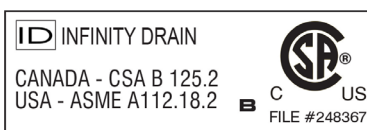
- Includes wedge wire grate, pitched channel, channel support, hair strainer and lift-out key
- ABS channel support easily fastens to the subfloor and supports channel
- 304L 16 Gauge Stainless Steel channel
- 316L 12 Gauge Stainless Steel Wedge Wire Grate
- Integrated waterproofing membrane
- Flow rate - 9 gpm per outlet
  - Flow rate measured at outlet only. Measurement does not account for water in channel or sheeting on shower floor.



### Installation

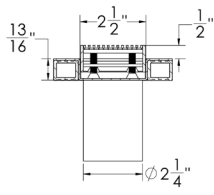
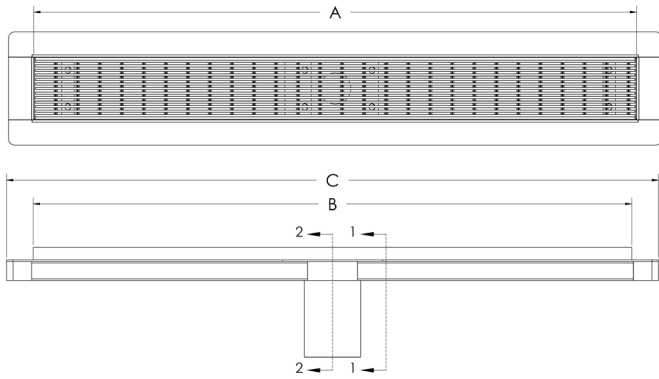


**Infinity Drain**  
145 Dixon Avenue  
Amityville, NY 11701  
Phone: 516.767.6786  
Fax: 516.740.3066  
www.Infinity Drain.com



NOTE: Installer must verify all rough-in dimensions prior to installation and consult local and national codes. Conformity and compliance to local and national codes are the responsibility of the installer.

## LINEAR DRAIN KIT

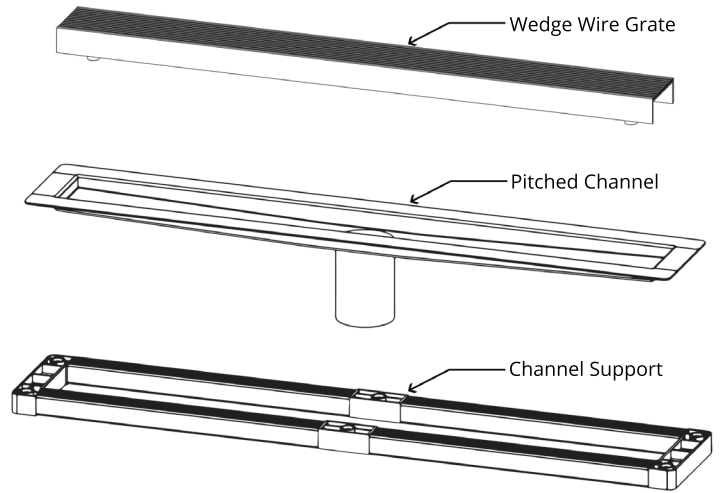


**SECTION 1-1**

Grate can be adjusted upwards an additional 1/2"

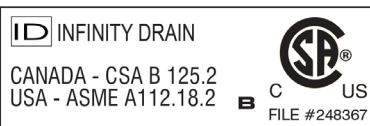
Screw holes to anchor supports to subfloor

**SECTION 2-2**



A (Overall Inside Length)	Linear Drain Kit Contents	B (Grate Length)	C (Overall Outside Length)	Finish	Linear Drain Kit Model Number
24"	1 - Wedge Wire Stainless Steel Grate 1 - Pitched Channel with Waterproofing 1 - Channel Support 1 - Hair Strainer 1 - Lift Out Key	23 7/8"	26"	Satin Stainless	171100 <input type="checkbox"/>
				Polished Stainless	171111 <input type="checkbox"/>
				Satin Bronze	171112 <input type="checkbox"/>
				Oil Rubbed Bronze	171113 <input type="checkbox"/>
30"	1 - Wedge Wire Stainless Steel Grate 1 - Pitched Channel with Waterproofing 1 - Channel Support 1 - Hair Strainer 1 - Lift Out Key	29 7/8"	32"	Satin Stainless	171114 <input type="checkbox"/>
				Polished Stainless	171115 <input type="checkbox"/>
				Satin Bronze	171116 <input type="checkbox"/>
				Oil Rubbed Bronze	171117 <input type="checkbox"/>
36"	1 - Wedge Wire Stainless Steel Grate 1 - Pitched Channel with Waterproofing 1 - Channel Support 1 - Hair Strainer 1 - Lift Out Key	35 7/8"	38"	Satin Stainless	171118 <input type="checkbox"/>
				Polished Stainless	171119 <input type="checkbox"/>
				Satin Bronze	171120 <input type="checkbox"/>
				Oil Rubbed Bronze	171121 <input type="checkbox"/>
42"	1 - Wedge Wire Stainless Steel Grate 1 - Pitched Channel with Waterproofing 1 - Channel Support 1 - Hair Strainer 1 - Lift Out Key	41 7/8"	44"	Satin Stainless	171122 <input type="checkbox"/>
				Polished Stainless	171123 <input type="checkbox"/>
				Satin Bronze	171124 <input type="checkbox"/>
				Oil Rubbed Bronze	171125 <input type="checkbox"/>
48"	1 - Wedge Wire Stainless Steel Grate 1 - Pitched Channel with Waterproofing 1 - Channel Support 1 - Hair Strainer 1 - Lift Out Key	47 7/8"	50"	Satin Stainless	171126 <input type="checkbox"/>
				Polished Stainless	171127 <input type="checkbox"/>
				Satin Bronze	171128 <input type="checkbox"/>
				Oil Rubbed Bronze	171129 <input type="checkbox"/>
60"	1 - Wedge Wire Stainless Steel Grate 1 - Pitched Channel with Waterproofing 1 - Channel Support 1 - Hair Strainer 1 - Lift Out Key	59 7/8"	62"	Satin Stainless	171132 <input type="checkbox"/>
				Polished Stainless	171133 <input type="checkbox"/>
				Satin Bronze	171134 <input type="checkbox"/>
				Oil Rubbed Bronze	171135 <input type="checkbox"/>

**Infinity Drain**  
145 Dixon Avenue  
Amityville, NY 11701  
Phone: 516.767.6786  
Fax: 516.740.3066  
www.Infinity Drain.com



NOTE: Installer must verify all rough-in dimensions prior to installation and consult local and national codes. Conformity and compliance to local and national codes are the responsibility of the installer.

## DRAIN KIT BY COMPONENT

### Wedge Wire Grate

Corresponding Kit Size	Length	Width	Height	Finish	Grate only Model Number
24"	23 7/8"	2 1/2"	1"	Satin Stainless	171245
				Polished Stainless	171246
				Satin Bronze	171247
				Oil Rubbed Bronze	171248
30"	29 7/8"	2 1/2"	1"	Satin Stainless	171249
				Polished Stainless	171250
				Satin Bronze	171251
				Oil Rubbed Bronze	171252
36"	35 7/8"	2 1/2"	1"	Satin Stainless	171253
				Polished Stainless	171254
				Satin Bronze	171255
				Oil Rubbed Bronze	171256
42"	41 7/8"	2 1/2"	1"	Satin Stainless	171257
				Polished Stainless	171258
				Satin Bronze	171259
				Oil Rubbed Bronze	171260
48"	47 7/8"	2 1/2"	1"	Satin Stainless	171261
				Polished Stainless	171262
				Satin Bronze	171263
				Oil Rubbed Bronze	171264
60"	59 7/8"	2 1/2"	1"	Satin Stainless	171327
				Polished Stainless	171328
				Satin Bronze	171329
				Oil Rubbed Bronze	171330

### Pitched Channel

Corresponding Kit Size	Overall Outside Length	Overall Outside Width	Height	Grate only Model Number
24"	26"	4 1/2"	13/16"	171287
30"	32"	4 1/2"	13/16"	171288
36"	38"	4 1/2"	13/16"	171291
42"	44"	4 1/2"	13/16"	171292
48"	50"	4 1/2"	13/16"	171295
60"	62"	4 1/2"	13/16"	171296

### Channel Support

Corresponding Kit Size	Overall Outside Length	Overall Outside Length	Height	Grate only Model Number
24"	26"	4 1/2"	3/4"	171335
30"	32"	4 1/2"	3/4"	171336
36"	38"	4 1/2"	3/4"	171337
42"	44"	4 1/2"	3/4"	171338
48"	50"	4 1/2"	3/4"	171339
60"	62"	4 1/2"	3/4"	171340

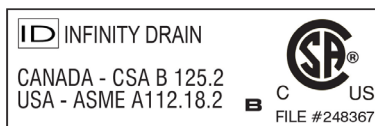
### Additional Components

Description	Model Number
2" Hair Strainer	171325
Lift-Out Key	171326

### Care & Maintenance

The wedge wire stainless steel linear drain top grates are made of 316L stainless steel. This material is non-porous, hygienic, rust-free and extremely durable. Bar Keepers Friend® and Soft Scrub® are commonly available products that can be used to protect and clean your Satin Stainless drain cover. For stains that have been left for an excessive amount of time, stronger cleaning agents such as Compound 302® may be needed. For Polished Stainless and other finishes we recommend a mild soap and a soft cloth for cleaning. DO NOT use any abrasive cleaners, scrub pads or allow household cleaning agents, such as bleach, to sit on the drain cover for a long period of time. Stainless steel does not rust. External factors, such as contamination from other highly ferrous metals, built up road salt, sea salt, or chlorine may have caused "surface" rust which can be removed using Barkeepers Friend®, Soft Scrub® with Bleach, or Compound 302®. Always follow the directions on the bottle. Follow proper maintenance procedures to prevent excessive surface rust. In areas of frequent exposure to salt, chlorine, and other chemical compounds, maintenance of the stainless grates should be performed at least 2-3 times per year.

**Infinity Drain**  
 145 Dixon Avenue  
 Amityville, NY 11701  
 Phone: 516.767.6786  
 Fax: 516.740.3066  
 www.Infinity Drain.com



NOTE: Installer must verify all rough-in dimensions prior to installation and consult local and national codes. Conformity and compliance to local and national codes are the responsibility of the installer.