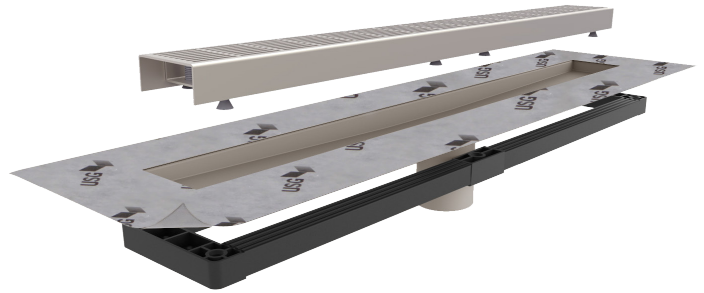


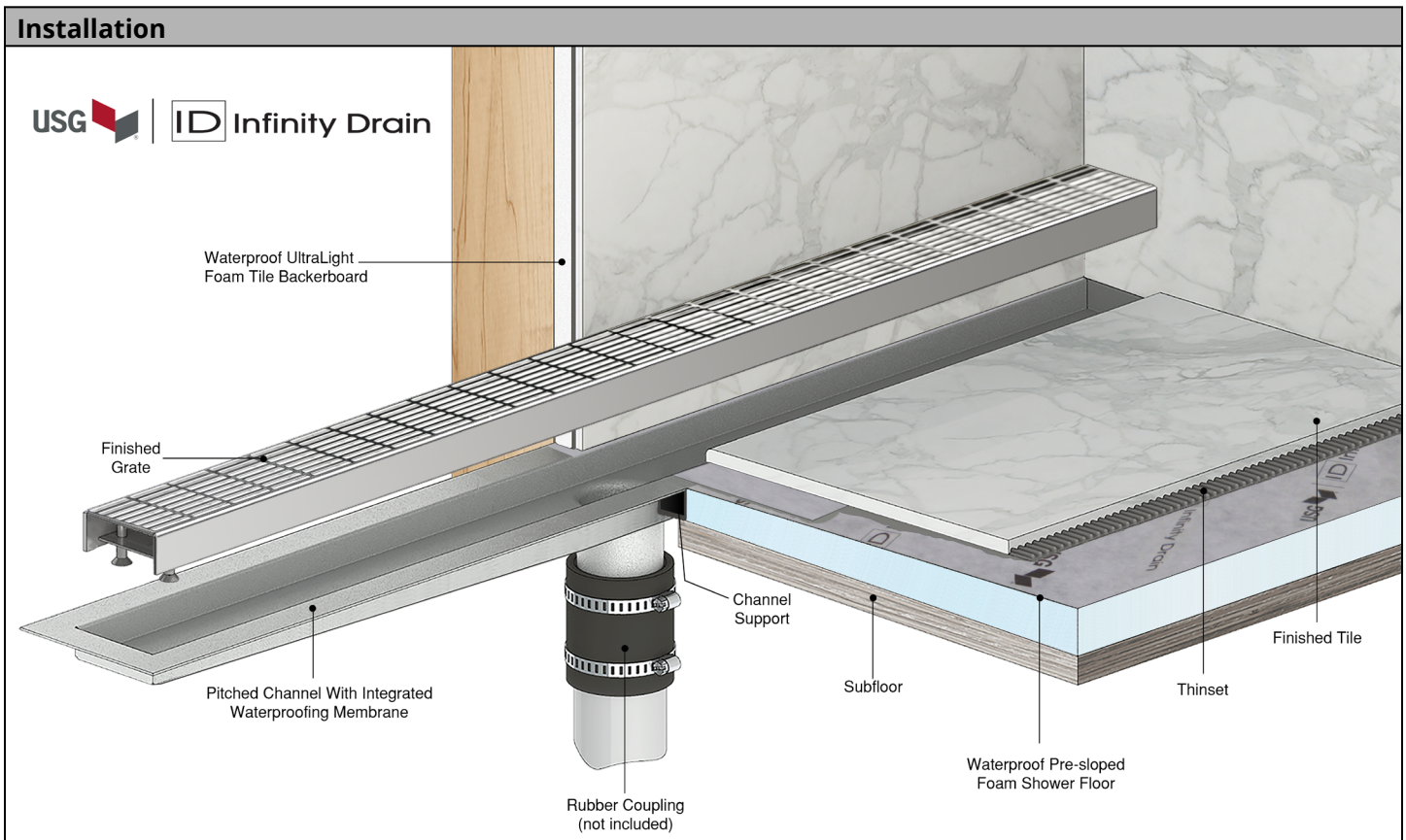
## USG DUROCK™ Brand Infinity Drain™ Perforated Linear Drain Kit

### Features

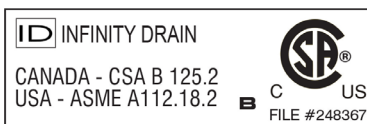
- Includes perforated grate, pitched channel, channel support, hair strainer and lift-out key
- ABS channel support easily fastens to the subfloor and supports channel
- 304L 16 Gauge Stainless Steel channel
- 304L 16 Gauge Stainless Perforated grate
- Integrated waterproofing membrane
- Flow rate - 9 gpm per outlet
  - Flow rate measured at outlet only. Measurement does not account for water in channel or sheeting on shower floor.



### Installation

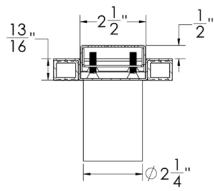
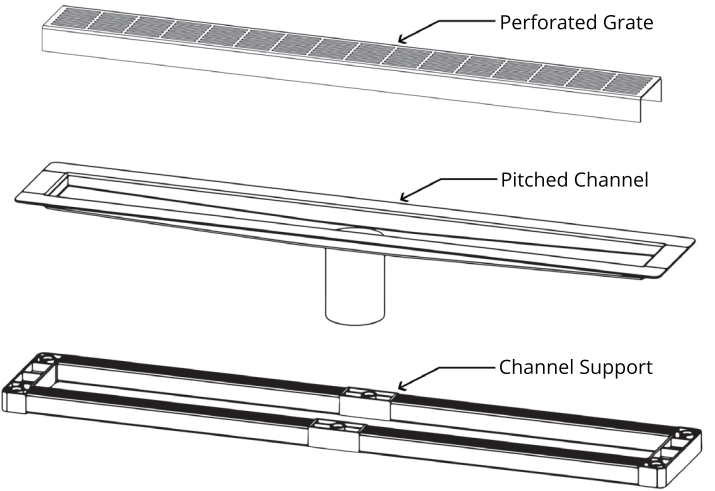
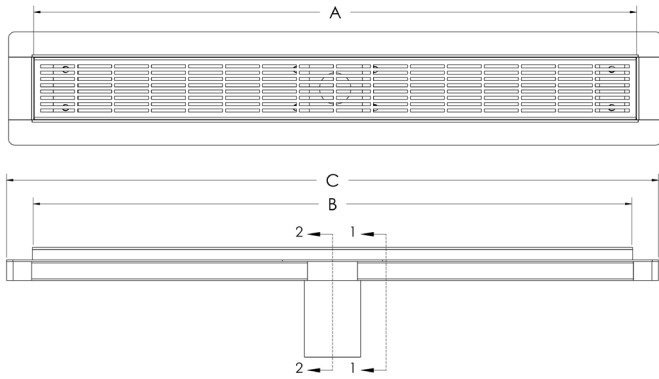


**Infinity Drain**  
145 Dixon Avenue  
Amityville, NY 11701  
Phone: 516.767.6786  
Fax: 516.740.3066  
www.Infinity Drain.com

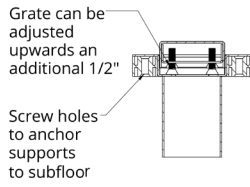


NOTE: Installer must verify all rough-in dimensions prior to installation and consult local and national codes. Conformity and compliance to local and national codes are the responsibility of the installer.

## LINEAR DRAIN KIT



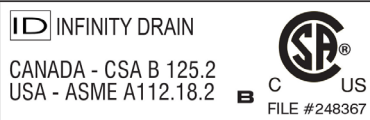
SECTION 1-1



SECTION 2-2

A (Overall Inside Length)	Linear Drain Kit Contents	B (Frame Length)	C (Overall Outside Length)	Finish	Linear Drain Kit Model Number
24"	1 - Perforated Stainless Steel Grate 1 - Pitched Channel with Waterproofing 1 - Channel Support 1 - Hair Strainer 1 - Lift Out Key	23 7/8"	26"	Satin Stainless Polished Stainless Satin Bronze Oil Rubbed Bronze	171200 <input type="checkbox"/> 171201 <input type="checkbox"/> 171202 <input type="checkbox"/> 171203 <input type="checkbox"/>
30"	1 - Perforated Stainless Steel Grate 1 - Pitched Channel with Waterproofing 1 - Channel Support 1 - Hair Strainer 1 - Lift Out Key	29 7/8"	32"	Satin Stainless Polished Stainless Satin Bronze Oil Rubbed Bronze	171204 <input type="checkbox"/> 171206 <input type="checkbox"/> 171207 <input type="checkbox"/> 171208 <input type="checkbox"/>
36"	1 - Perforated Stainless Steel Grate 1 - Pitched Channel with Waterproofing 1 - Channel Support 1 - Hair Strainer 1 - Lift Out Key	35 7/8"	38"	Satin Stainless Polished Stainless Satin Bronze Oil Rubbed Bronze	171209 <input type="checkbox"/> 171210 <input type="checkbox"/> 171211 <input type="checkbox"/> 171212 <input type="checkbox"/>
42"	1 - Perforated Stainless Steel Grate 1 - Pitched Channel with Waterproofing 1 - Channel Support 1 - Hair Strainer 1 - Lift Out Key	41 7/8"	44"	Satin Stainless Polished Stainless Satin Bronze Oil Rubbed Bronze	171213 <input type="checkbox"/> 171214 <input type="checkbox"/> 171215 <input type="checkbox"/> 171216 <input type="checkbox"/>
48"	1 - Perforated Stainless Steel Grate 1 - Pitched Channel with Waterproofing 1 - Channel Support 1 - Hair Strainer 1 - Lift Out Key	47 7/8"	50"	Satin Stainless Polished Stainless Satin Bronze Oil Rubbed Bronze	171217 <input type="checkbox"/> 171218 <input type="checkbox"/> 171219 <input type="checkbox"/> 171220 <input type="checkbox"/>
60"	1 - Perforated Stainless Steel Grate 1 - Pitched Channel with Waterproofing 1 - Channel Support 1 - Hair Strainer 1 - Lift Out Key	59 7/8"	62"	Satin Stainless Polished Stainless Satin Bronze Oil Rubbed Bronze	171317 <input type="checkbox"/> 171318 <input type="checkbox"/> 171319 <input type="checkbox"/> 171320 <input type="checkbox"/>

**Infinity Drain**  
145 Dixon Avenue  
Amityville, NY 11701  
Phone: 516.767.6786  
Fax: 516.740.3066  
www.Infinity Drain.com



NOTE: Installer must verify all rough-in dimensions prior to installation and consult local and national codes. Conformity and compliance to local and national codes are the responsibility of the installer.

## DRAIN KIT BY COMPONENT

### Perforated Grate

Corresponding Kit Size	Length	Width	Height	Finish	Grate only Model Number
24"	23 7/8"	2 1/2"	1"	Satin Stainless	171265
				Polished Stainless	171266
				Satin Bronze	171267
				Oil Rubbed Bronze	171268
30"	29 7/8"	2 1/2"	1"	Satin Stainless	171269
				Polished Stainless	171270
				Satin Bronze	171271
				Oil Rubbed Bronze	171272
36"	35 7/8"	2 1/2"	1"	Satin Stainless	171273
				Polished Stainless	171274
				Satin Bronze	171275
				Oil Rubbed Bronze	171276
42"	41 7/8"	2 1/2"	1"	Satin Stainless	171277
				Polished Stainless	171278
				Satin Bronze	171279
				Oil Rubbed Bronze	171280
48"	47 7/8"	2 1/2"	1"	Satin Stainless	171281
				Polished Stainless	171282
				Satin Bronze	171283
				Oil Rubbed Bronze	171284
60"	59 7/8"	2 1/2"	1"	Satin Stainless	171331
				Polished Stainless	171332
				Satin Bronze	171333
				Oil Rubbed Bronze	171334

### Pitched Channel

Corresponding Kit Size	Overall Outside Length	Overall Outside Width	Height	Grate only Model Number
24"	26"	4 1/2"	13/16"	171287
30"	32"	4 1/2"	13/16"	171288
36"	38"	4 1/2"	13/16"	171291
42"	44"	4 1/2"	13/16"	171292
48"	50"	4 1/2"	13/16"	171295
60"	62"	4 1/2"	13/16"	171296

### Channel Support

Corresponding Kit Size	Overall Outside Length	Overall Outside Length	Height	Grate only Model Number
24"	26"	4 1/2"	3/4"	171335
30"	32"	4 1/2"	3/4"	171336
36"	38"	4 1/2"	3/4"	171337
42"	44"	4 1/2"	3/4"	171338
48"	50"	4 1/2"	3/4"	171339
60"	62"	4 1/2"	3/4"	171340

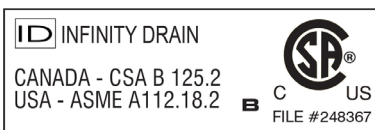
### Additional Components

Description	Model Number
2" Hair Strainer	171325
Lift-Out Key	171326

### Care & Maintenance

The perforated stainless steel grates are made of 304L stainless steel. This material is non-porous, hygienic, rust-free and extremely durable. Bar Keepers Friend® and Soft Scrub® are commonly available products that can be used to protect and clean your Satin Stainless drain cover. For stains that have been left for an excessive amount of time, stronger cleaning agents such as Compound 302® may be needed. For Polished Stainless and other finishes we recommend a mild soap and a soft cloth for cleaning. DO NOT use any abrasive cleaners, scrub pads or allow household cleaning agents, such as bleach, to sit on the drain cover for a long period of time. Stainless steel does not rust. External factors, such as contamination from other highly ferrous metals, built up road salt, sea salt, or chlorine may have caused "surface" rust which can be removed using Barkeepers Friend®, Soft Scrub® with Bleach, or Compound 302®. Always follow the directions on the bottle. Follow proper maintenance procedures to prevent excessive surface rust. In areas of frequent exposure to salt, chlorine, and other chemical compounds, maintenance of the stainless grates should be performed at least 2-3 times per year.

**Infinity Drain**  
 145 Dixon Avenue  
 Amityville, NY 11701  
 Phone: 516.767.6786  
 Fax: 516.740.3066  
[www.Infinity Drain.com](http://www.Infinity Drain.com)



NOTE: Installer must verify all rough-in dimensions prior to installation and consult local and national codes. Conformity and compliance to local and national codes are the responsibility of the installer.