

OneLiner

The One and Only Structured Shower Liner



www.dixsystems.ca

Ph. 1-888-450-0112

Fax. 1-780-487-0110

www.dixsystems.com

Complete Installation Manual

For Your Dix Systems OneLiner Kit



PLEASE READ THROUGH THIS ENTIRE MANUAL TO ASSURE THE PROPER INSTALLATION OF YOUR DIX SYSTEMS ONELINER SHOWER PAN SYSTEM FOR YOUR LEAK-PROOF SHOWER FLOOR.

TABLE OF CONTENTS

Important Considerations	2
Step 1 - Drain Placement	3
Step 2 & 3 – Clamp Removal & Pre-Pitch Sticks Diagram	4 & 5
Step 4 – OneLiner Install & Drain Hole Cut	6
Step 5 & 6 – Drain Attach. & Curb Cut	7
Step 7 – Bituthene Application	8
Step 8 – Install the Wall Board	9
Step 9 – Kirb Perfect Install	10
Step 10 – Quick Pitch & Mortar	11-14
Warranty	15

The following symbols are used to denote special and important information. This will help you understand the most important considerations and items to pay attention to.



Helpful Hint



Very Important

IMPORTANT CONSIDERATIONS

Our aim at Dix Systems Inc. is for our customers to experience the wonderful warmth and beautiful style that comes with any ceramic tile, stone or marble shower floor, along with the confidence desired from our customers for a leak-proof hassle free shower floor installation kit that will save you time and money on installation and costly repairs due to leaks. We have worked hard to design the best ceramic tile, stone and marble leak-proof shower floor complete installation kit for the Do-It- Yourselfer, Home Renovator or Home Builder available for the North American market. Please be sure to read this entire manual carefully and call us with any questions.

Unpack Your Order.

Check and verify the contents of your shipment.

- This Step By Step manual
- 1 – Dix Systems OneLiner
- 1 – Pre-Pitch Kit #PP-STD-201
- 1 – Three Part Clamp Drain
- 1 – Quick Pitch Standard Kit #QPK-101
- 1 – Kirb Perfect #543
- 5 – Linear Feet Of Bituthene
- 1 – Positive Weep Protector



Check It Out

Check Your Documents – This installation manual covers all of the general information you will need to install the Dix Systems OneLiner in conjunction with the additional Product Kit supplied with your OneLiner. This system is specifically designed to cover the process of installing ceramic tile, stone or marble as a final covering for your shower floor.

Looking for Leaks – Every OneLiner is water tested prior to shipment, however we strongly encourage that you water test the OneLiner after you have received it to ensure there was no damage to the OneLiner due to shipping.

Customer Service
Canada and United States
Monday – Friday
8:30 am – 4:30 pm MST
1-888-450-0112
ldix@dixsystems.com

There will be a response the next business day when we are contacted after regular business hours posted above.

STEP 1 – DRAIN PLACEMENT

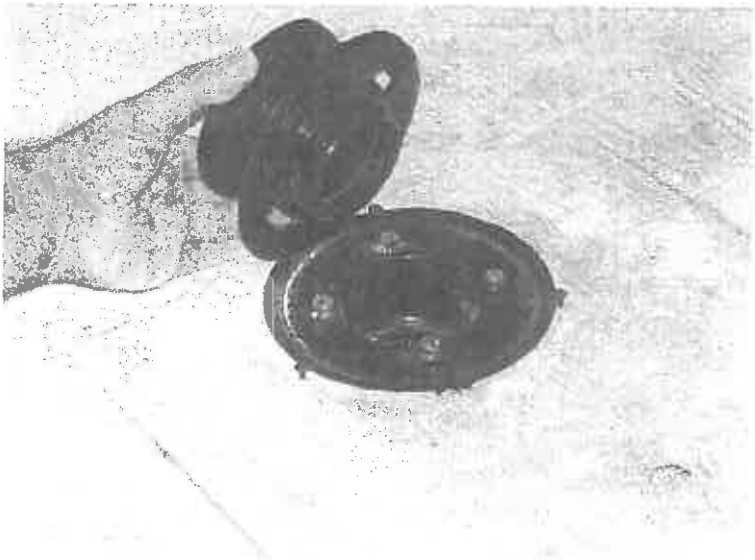


- For New Construction cut hole for drain placement approx. 5" diameter around your 2" pvc pipe.
- ✳️ • This Should Be Done By A Qualified Plumber.
- For Remodeling Go To Step #2



- Clean the floor; remove any sharp objects that may come into contact with the OneLiner and hinder the installation process.
- ⚠️ • Try to maintain a clean work environment during the complete installation process to avoid any confusion or accidents.

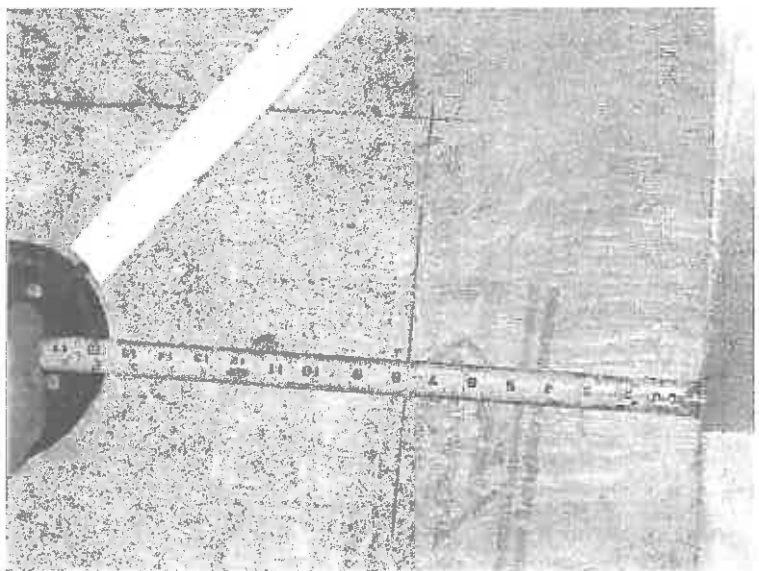
STEP 2 – CLAMP REMOVAL



- Unbolt and remove clamp section of the 3-part clamp drain.

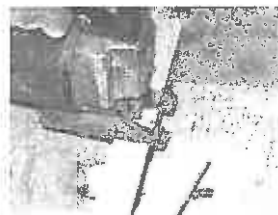
*** If you are installing the recommended 3-part clamp drain supplied with your OneLiner Kit, check local plumbing codes for proper installation required for your area. You may need a qualified plumber for this step.**

STEP 3 – PRE-PITCH STICKS



The Pre-Pitch Kit is installed to ensure that all secondary water flows to the drain to help eliminate mold and mildew created by standing water.

Measure approx. 1" from drain to outside perimeter of shower. (A) Cut the (6) Pre-Pitch sticks provided as shown. (B) Attach 2-1" two-way adhesive strips (supplied) to the bottom of the Pre-Pitch sticks, one on each end. (C) Press firmly in place approx 2 to 2 ½ ft. apart from each other. (D) Adhesive strips facing down onto sub-floor. ****Pre-Pitch Kit has replaced the previous wooden bars****



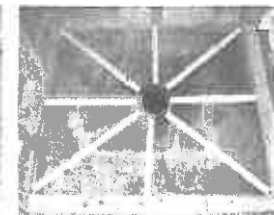
A



B

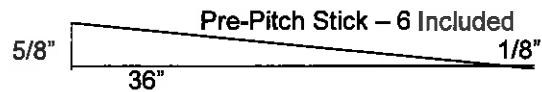


C

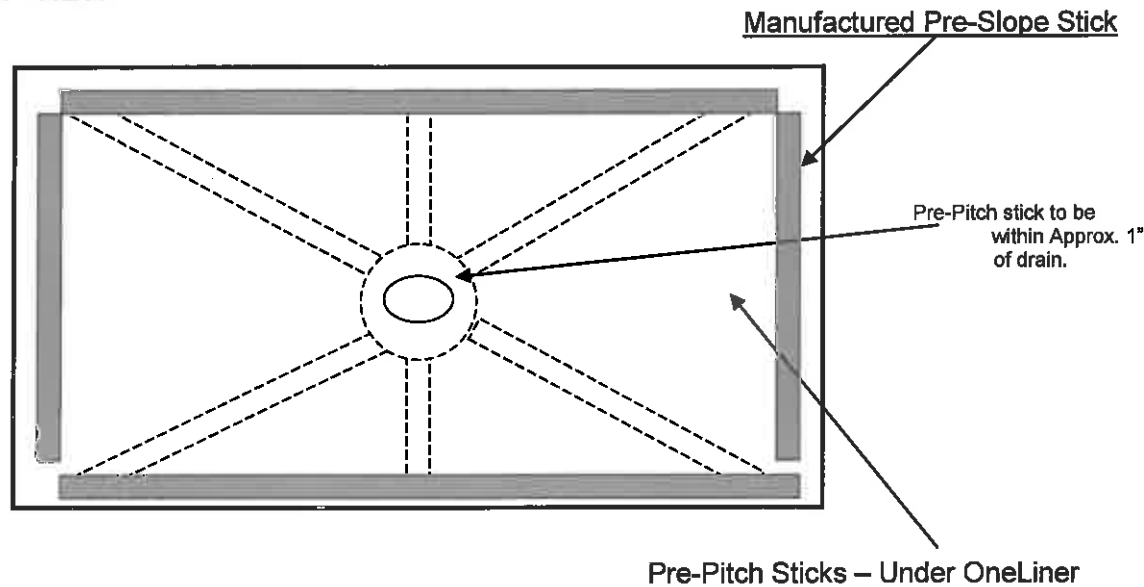


D

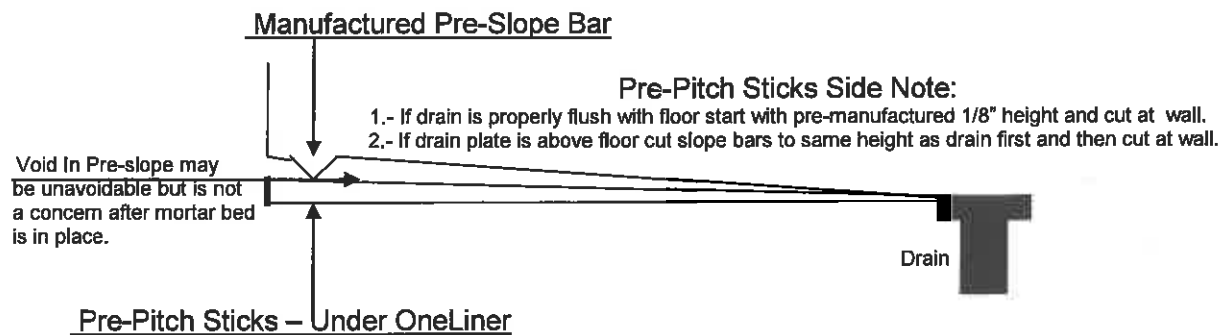
PRE-PITCH STICKS – DIAGRAM




TOP VIEW



SIDE VIEW

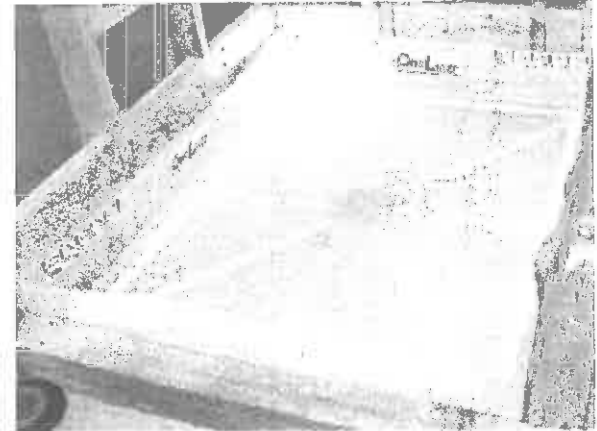


 NOTE: Some waves in bottom of the OneLiner may be obvious, with mortar bed in place and with Quick Pitch system (provided) this will sufficiently reinforce cement, reducing flexibility in bottom of OneLiner.

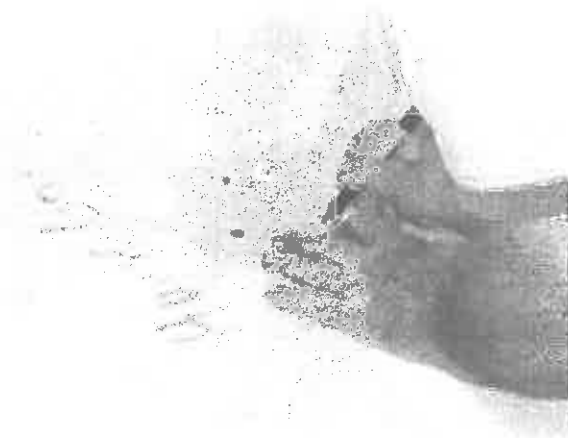
STEP 4 – ONELINER INSTALL & DRAIN HOLE CUT

Check measurements of the OneLiner and shower floor. If not exact fit:

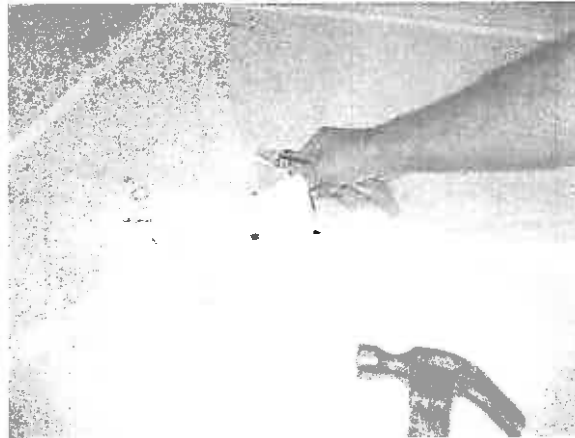
- Centre the shower liner within the shower area
- If too small, strapping on studs may be necessary to form exact fit.
- If too big, notch bottom of studs up to 10" in height.
- Insert your Dix Systems OneLiner on top of the Pre-Pitch sticks



- A.** You will be able to see the drain through the opaque polyethylene plastic. Using a black felt marker, mark out the boltholes.
- B.** Using your utility knife, puncture a hole in the centre of the drain. Cut out the diameter of the drain hole. By lifting OneLiner, identify bolthole location.
- C.** Carefully cut around boltholes. ***Do NOT Cut Past Boltholes!***

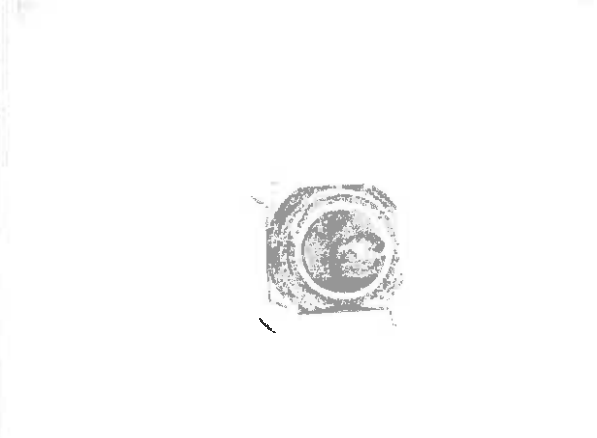


A



B

6



C

STEP 5 – DRAIN ATTACHMENT

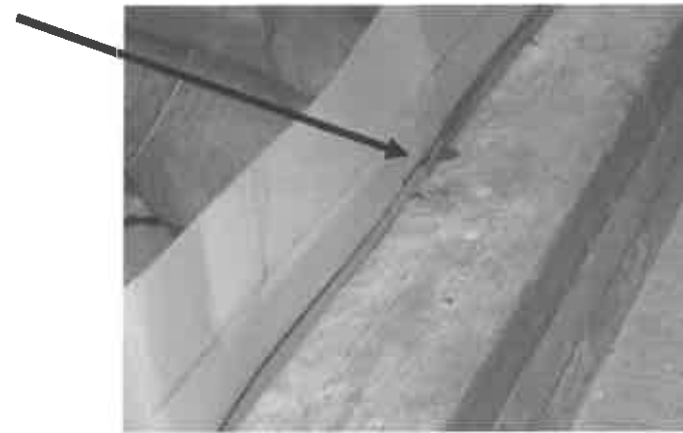
- Replace bolt flange over bolts. Lock into place by turning counter clockwise. Plumber's caulk, between the OneLiner and the first flange, may be needed to ensure watertight fit.
- Using ratchet or wrench, tighten bolts securely down onto flange.



STEP 6 – CUTTING THE CURB

Preparation for Kirb Perfect Installation

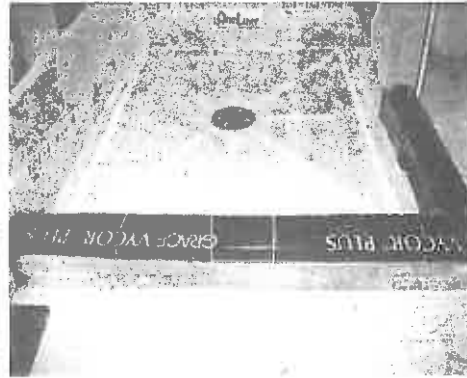
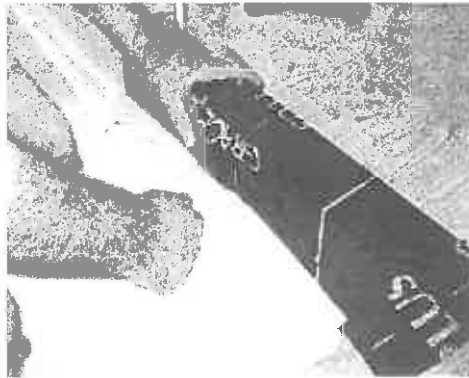
- Cut OneLiner using utility knife or other cutting tools to the height required for the curb opening. Cut OneLiner flush with curb.



STEP 7 - BITUTHENE APPLICATION

Waterproofing the Curb

- Using bituthene (supplied), lay over top of curb and allow to drop 1" into OneLiner.
 - B.C. Residence fasten with Butyl type caulking in a continuous bead to top edge of OneLiner and top edge of curb as per required by B.C. plumbing code.
- At doorjamb, wrap bituthene around door opening and OneLiner, sealing all edges and corners to 3" in height at doorjamb.



VERY IMPORTANT!

Water Test The OneLiner! Plug the drain and fill the shower area to flood level after installation to ensure proper sealing at drain clamping collar has been achieved. Once the shower area is filled to flood level, take an oil-based marker and mark it at the full level and let stand for 24 hours. Check marked level to ensure that there are no leaks.

STEP 8 – INSTALLING THE BACKER BOARD/CEMENT BOARD

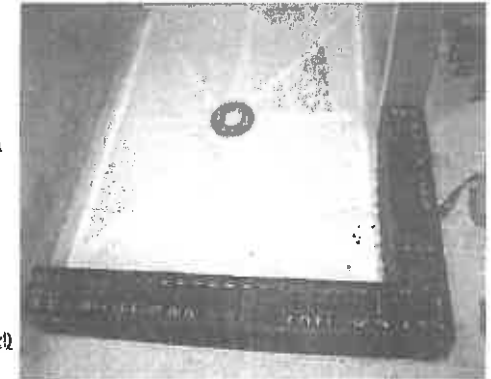
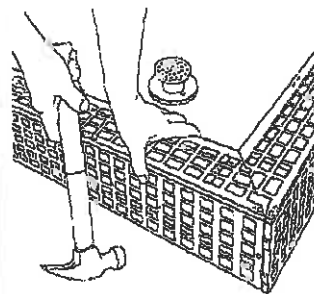
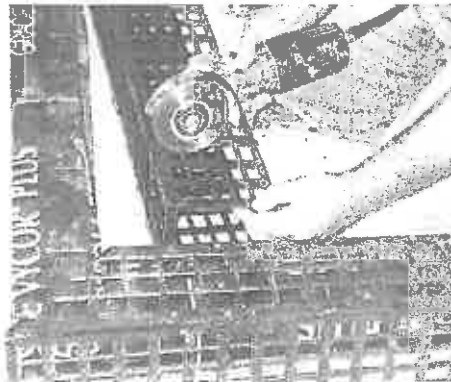
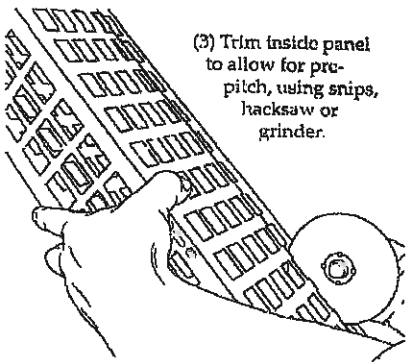
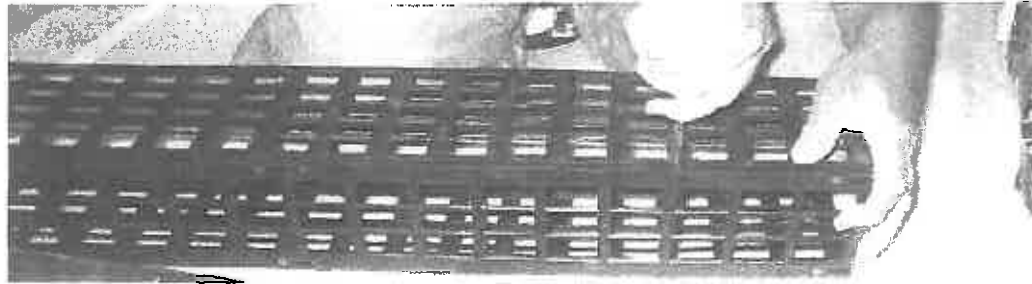
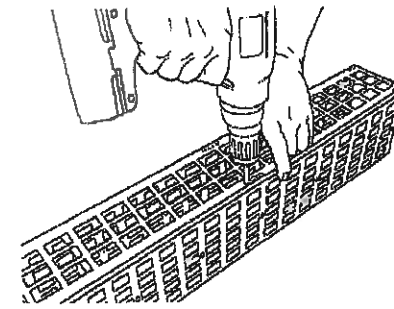
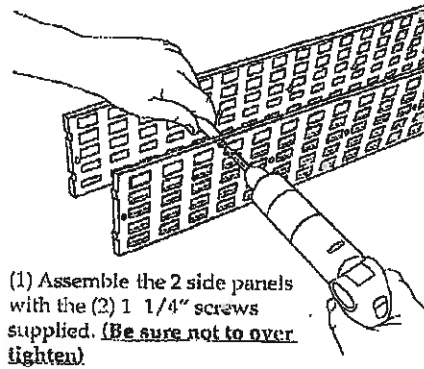
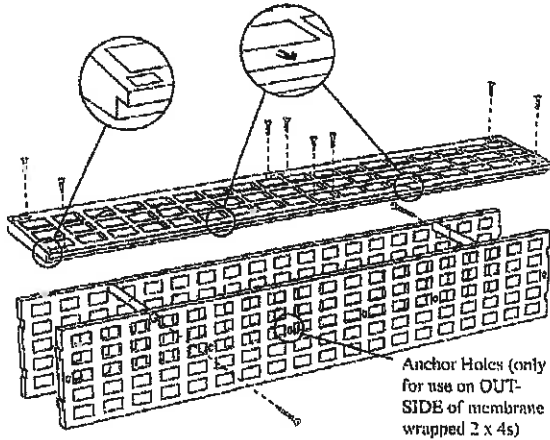
- For Custom OneLiners place standard 2x4's on each corner of the floor of the OneLiner to **set** backer board / cement board on.
- For Standard OneLiners place backer board / cement board on manufactured lip.
- When the board is in place, screw the **TOP** of the board to studs to hold in place. Use a strait edge and mark the board **ABOVE** the OneLiner.

*** NEVER NAIL OR SCREW DIRECTLY INTO THE ONELINER !**

- Fasten board to studs just above the strait edge marked line. Once the board is secure remove the 2x4's.



STEP 9 – KIRB PERFECT ASSEMBLY & INSTALLATION



STEP 10 – QUICK PITCH & MORTAR INSTALLATION

Preparation Overview

Quick Pitch, properly installed, will ensure a minimum drainage slope of 1/4" fall in elevation per 12" run. The Quick Pitch centre ring and float sticks are designed to stay in the floor providing reinforcement to the mortar bed. Quick Pitch also allows the drain riser to be adjusted up and down to compensate for the different thickness of the tiles and to allow for removal at any time to clear any blockage. The Quick Pitch Standard Installation Kit is designed for an approximate 36"x 60" area with the drain positioned in the center. The Quick Pitch Extended Float Stick Kit is designed for those elongated or irregularly shaped installations where the distance from the drain to walls and corners exceed 36".

PART A

Unscrew threaded drain riser and position centre ring on top of flange adaptor bolts with the float stick socket openings pointing UP.



Be Sure the Drain is Level

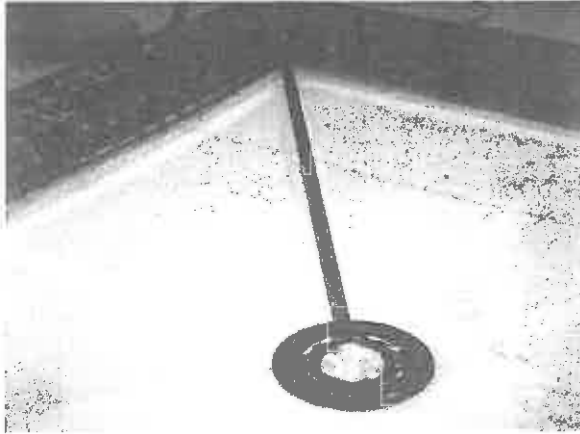
The centre ring is designed to sit on top of the flange adaptor bolts. This clearance adds 1/2" in height to conform to the 1 1/2" minimum mortar bed requirement, allows for the Pre-Pitch, and provides optimum efficiency for moisture to pass through the weep holes. The Positive Weep Protector ensures that the weep holes are protected from being plugged during installation. Weep hole protectors are recommended.

Install the Positive Weep Protector under the centre ring. This can be done now or after the Quick Pitch sticks are in place. Once the drain riser is replaced at the end of Part B's instructions, the Positive Weep Protector will be held in place.

STEP 10 – QUICK PITCH & MORTAR INSTALLATION (con't)

PART B

Pre-position float sticks. Insert the male tab on narrow end of float stick into the selected female socket of the centre ring so that the tops of the float sticks and centre ring are flush (picture A). It is desirable for the float stick end furthest from the centre ring to be approximately 2 – 2 ½ ft. from adjacent float stick end (Diagram B)



Picture A

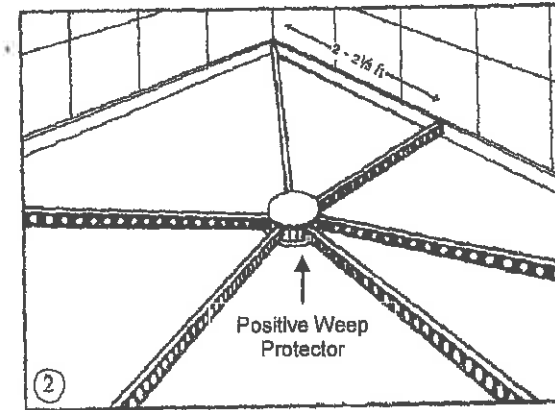
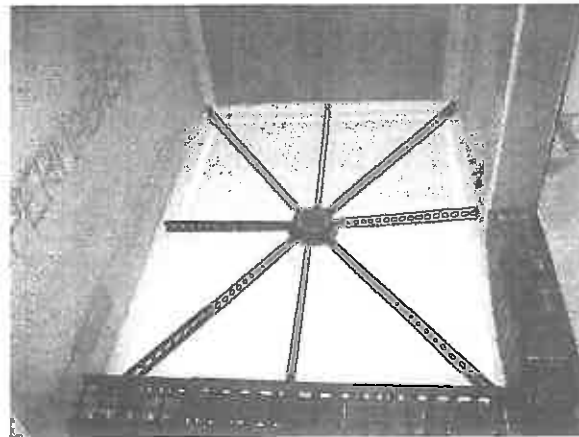


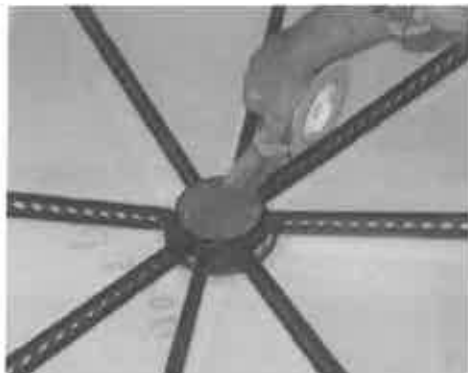
Diagram B

Add extra or extended float sticks as needed. Cut sticks to desired length. Re-install drain riser into drain flange adaptor to hold the centre ring and float sticks in place (picture C). Remember to place your Positive Weep Protector under the centre ring around the drain.



STEP 10 – QUICK PITCH & MORTAR INSTALLATION (con't)

PART C



Cover drain holes in cover plate with masking tape to keep drain clean during balance of installation.




Mix the dry ingredients of your mud (1 part Portland cement, 4 parts sand, 1 part water) with your shovel or trowel.



Add enough water to the dry admix (or premix) to bring the mortar to the consistency of a compact snowball. This consistency will allow the material to be easily distributed, troweled, and lightly compacted.

 When mixing mortar “sprinkle” the one part water on with a saturated sponge while mixing. This will help avoid “clumping”

 If a greater pitch is desired, sticks may be shimmed. If, once the float sticks are in place, the OneLiner has voids or a “bubble” (waves may be apparent due to the drying of polyethylene plastic during manufacturing) simply pack mud under sticks to obtain the desired level.



STEP 10 – QUICK PITCH & MORTAR INSTALLATION (con't)

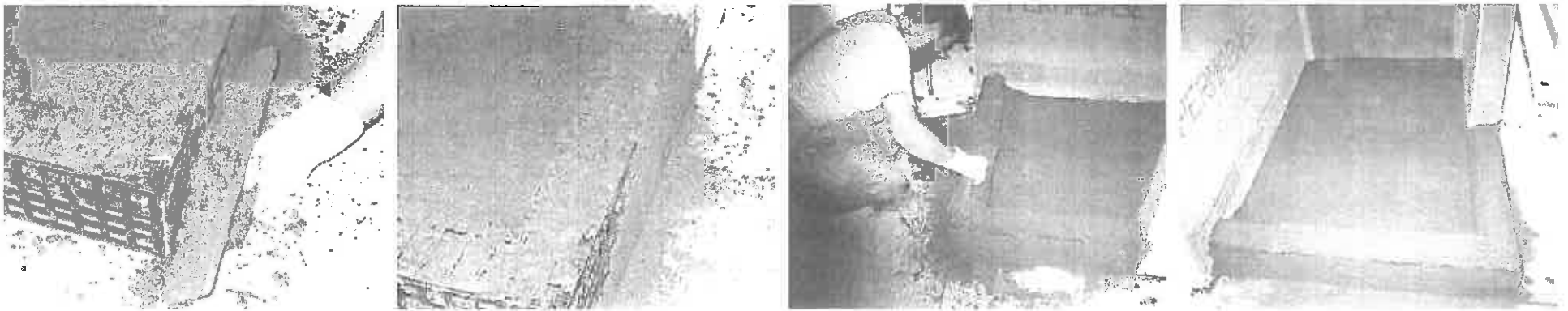
✳ It is not desirable or necessary for sticks to fit tightly into corners or against a wall. Do not fit sticks so tight as to puncture or put pressure on OneLiner.

PART D

Starting with area farthest from the exit, spread your moistened mortar one section at a time. Slightly over fill the section and spread the mortar with your trowel or screed stick by dragging it along the top surface of the float sticks. Tamp or lightly compact the mortar with your trowel.



Pack and fill side and top panels of attached curb with mud.



After tamping or lightly compacting, use your sponge to sprinkle water (approximately ½ gal) over entire surface.
LET DRY OVERNIGHT.

CONSUMER WARRANTY INFORMATION Limited Warranty

The manufacturer will issue the following limited warranty for products used in residential and commercial ceramic tile shower applications for 5 years and will be a guide to determine manufacturer's limited warranty issues.

A. The manufacturer warrants to the original consumer that the OneLiner will not puncture or break apart during application. It will contain water to a maximum of 3" deep.

B. To obtain limited warranty service, the original consumer must notify the manufacturer directly or through any authorized dealer of any defect, not later than 30 days after discovering the defect, but within the time period of the limited warranty.

C. Replaced OneLiners are warranted for full warranty period.

D. This limited warranty shall not apply to damage arising from any of the following:

- φ Accidents, abuse or misuse
- φ Exposure to extreme heat
- φ Extreme scratching, impact of cutting
- φ Improper installation
- φ Improper fabrication
- φ Freight damage
- φ Modifications and / or alterations
- φ Any damage caused by an act of God

E. Proof of purchase is required when requesting limited warranty service. The original consumer must present or send to the OneLiner dealer a valid sales receipt or other documents that establish proof of purchase.

F. A written and detailed description of the problem must be presented or sent to the OneLiner dealer by the original consumer, along with a photograph that clearly outlines the warranty issue.

G. Replacement of the defective OneLiner(s) as provided under this limited warranty is the exclusive remedy of the consumer. The manufacturer does not authorize any person to create for it any obligation or liability in connection with this product.

H. The manufacturer shall not be liable to the consumer or any other person for any incidental, special or consequential damages, arising out of breach of this limited warranty or any implied limited warranty (including merchantability).

I. Some states do not allow the exclusion of limitation of incidental or consequential damages, so the above limitation or exclusion may not apply to the purchaser.

J. This limited warranty gives the consumer specific legal rights and also other rights that vary from state to state.

K. The consumer may, at their option, choose that the manufacturer refund to them the retail cost of the defective OneLiner(s) as a final remedy.

WARRANTY REGISTRATION

Consumer Name _____

Address _____

City / Prov / State / Zip Code / PC _____

Telephone _____

NAME OF RETAILER

Product Purchased From _____

Size/Number _____

Date Purchased _____

Quantity Purchased _____

Who installed your OneLiner?

Self Professional Installer

**PLEASE INCLUDE COPY OF PURCHASE
RECEIPT ALONG WITH THIS WARRANTY
REGISTRATION**

RETURN POLICY

IF YOU ARE CONSIDERING RETURNING THIS PRODUCT
FIRST CALL 1-888-450-0112 FOR RETURN POLICY.

NO RETURNS, REFUNDS OR EXCHANGES ACCEPTED ON
CUSTOM ONELINERS.

NOTES
